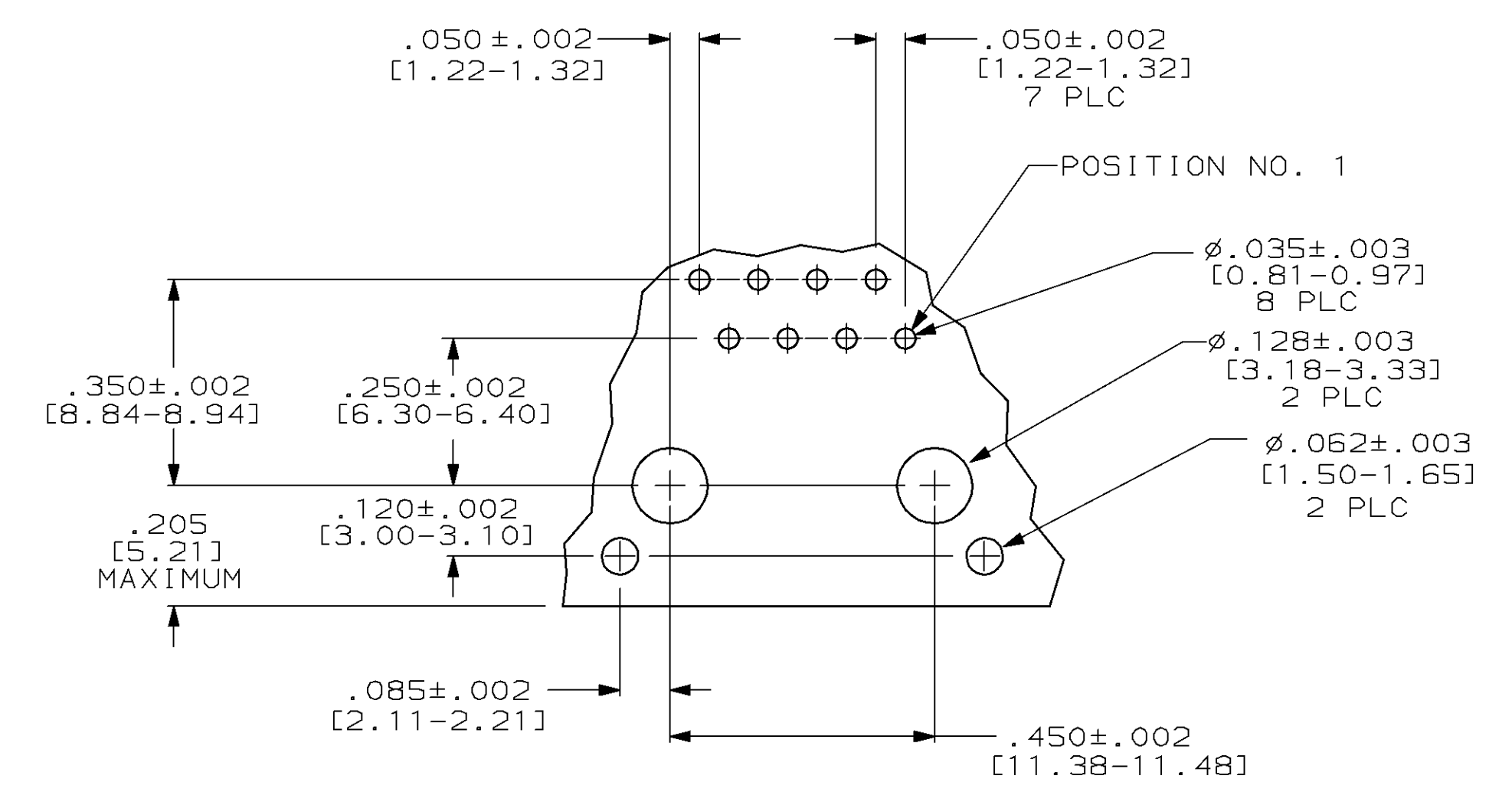
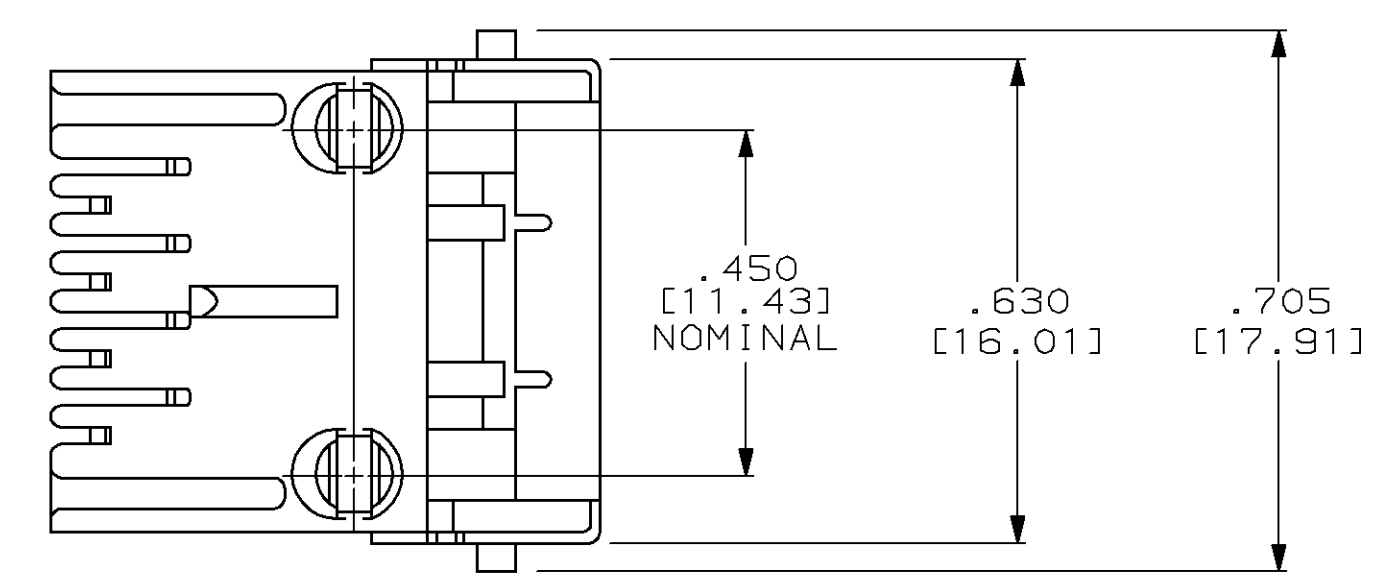
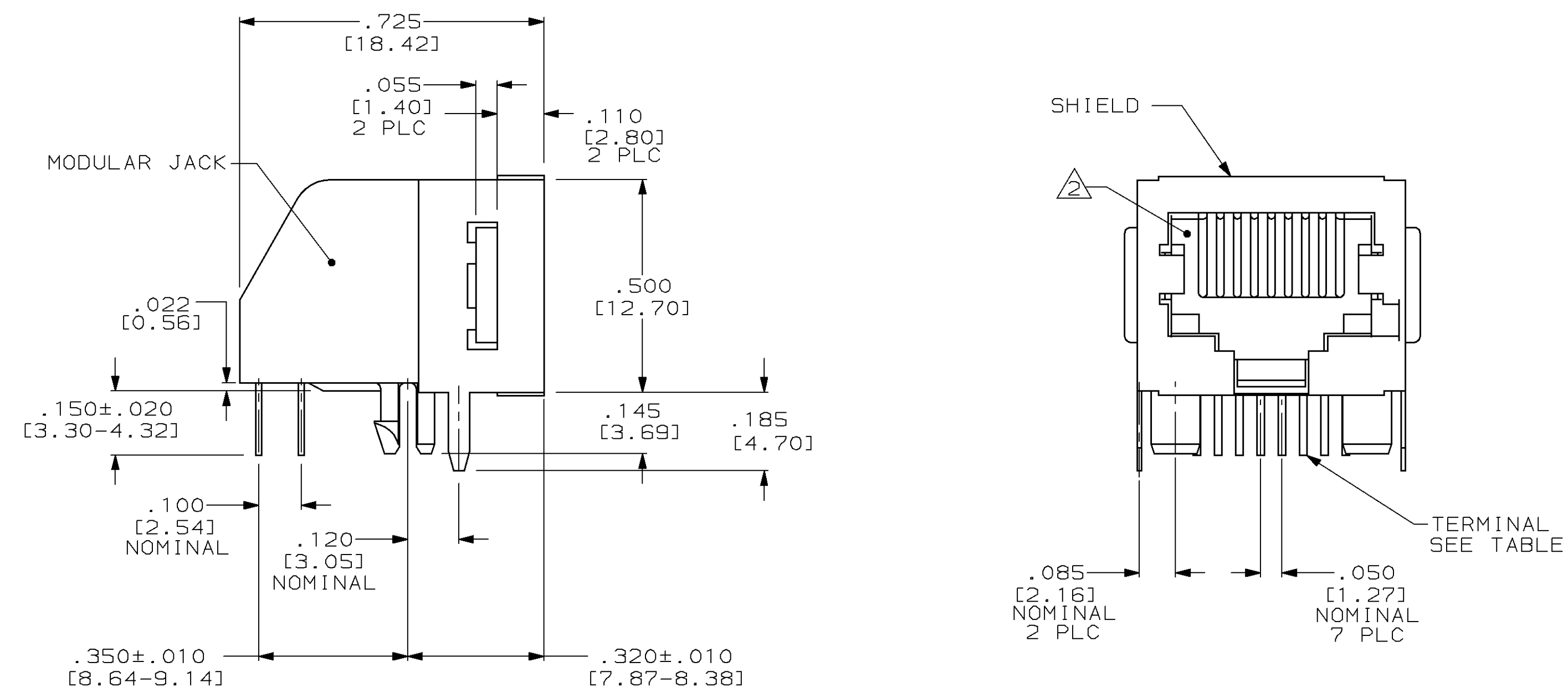


LOC		DIST		REVISIONS				
AA		22		REV	DESCRIPTION	DATE	OWN	APVD
				E	085;-2;EC 0502-0845-97	20MAY98	D5	CB



SUGGESTED PRINTED CIRCUIT BOARD MOUNTING HOLE LAYOUT VIEW SHOWN AS CIRCUIT SIDE OF BOARD

- 1 MATERIAL:  
HOUSING-PBT POLYESTER BLACK.  
TERMINAL-.014 [0.36] THICK PHOS-BRONZE PLATE WITH .000050 [1.27µm] THICK HARD GOLD IN LOCALIZED GOLD PLATE AREA AND .000080 [2.03µm] THICK TIN-LEAD IN SOLDER AREA OVER .000050 [1.27µm] THICK NICKEL UNDERPLATE.  
SHIELD-.010 [0.25] THICK COPPER ALLOY, TIN-LEAD PLATED.
- 2 CAVITY CONFORMS TO FCC RULES AND REGULATIONS, PART 68, SUBPART F.
- 3. FOR APPLICATION INFORMATION SEE AMP SPECIFICATION 114-2048.
- 4. FOR PERFORMANCE REQUIREMENTS SEE AMP SPECIFICATION 108-1163.
- 5 ALL DIMENSION SHOWN ARE MAXIMUM UNLESS OTHERWISE SPECIFIED.
- 6. DIMENSIONS IN [ ] ARE MILLIMETERS.

8	556591-1
TERMINALS REQUIRED	PART NO.

<small>THIS DRAWING IS A CONTROLLED DOCUMENT FOR AMP TECHNOLOGIES. IT IS SUBJECT TO CHANGE AND THE CONTROLLING ENGINEERING ORGANIZATION SHOULD BE CONTACTED FOR THE LATEST REVISION.</small>		DWN R. MARTIN 11-16-89 CHK B. FOX 12-14-89 APVD M. PAYNE 12-18-89	<b>AMP</b> AMP Incorporated Harrisburg, PA 17105-3508
DIMENSIONS: (INCHES [mm])	TOLERANCES UNLESS OTHERWISE SPECIFIED: 0 PLC ±.005 1 PLC ±.003 2 PLC ±.002 3 PLC ±.001 4 PLC ±.0005 ANGLES ±.005	NAME: MODULAR JACK ASSEMBLY, 8 POSITION, SHIELDED, KEYED, LOW PROFILE, RIGHT ANGLE WITH PRINTED BOARD GROUND AND PANEL STOPS APPLICATION SPEC: - PRODUCT SPEC: -	SIZE: A1 CAGE CODE: 00779 DRAWING NO: 556591
MATERIAL: △	FINISH: △	WEIGHT: -	SCALE: 4:1
CUSTOMER DRAWING		SHEET 1 OF 1	REV E